

Turning Food Waste Into Energy



- Biodigesters are a composting solution that creates biogas as a byproduct of the accelerated composting process
- Food scraps and water are placed in the inlet and the unit resealed
- Microbes digest the food scraps daily and create biogas (mostly methane with CO₂ and water vapour)
- Biogas is continuously cleaned via the filter and is ready to cook with
- An outflow of liquid fertiliser is continuously created, matching the inflow of food scraps
- To use liquid fertiliser dilute with 3 parts water for top dressing or as soil preparation before planting



Food Scraps In

Daily Digestion

Gas Created

Use Gas

Use Liquid Fertiliser

Activation & Maintenance

Ready for activation



Note: always secure unit with plunger to stop thirsty & curious wildlife



Activation & Maintenance

Source manure



Note: dry manure is easier to find than fresh. Can be used as a supplement.

Note: Chaff bags are a good way of transporting

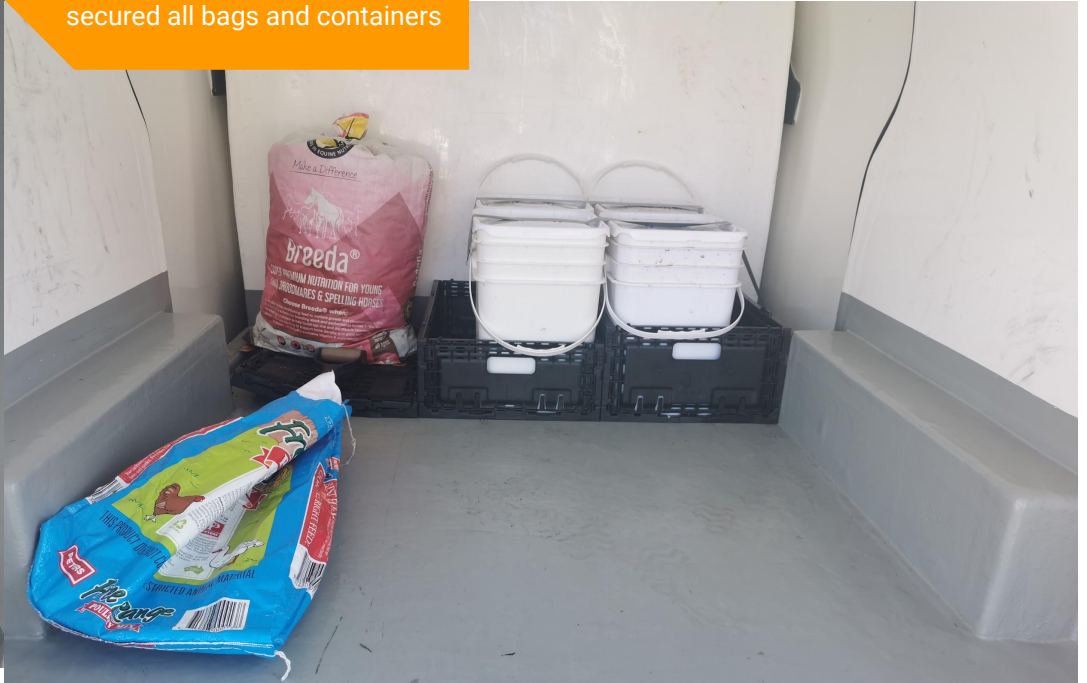


Activation & Maintenance

Transport manure



Note: make sure you have secured all bags and containers



Activation & Maintenance

Setup workflow



Note: gloves, shovel and buckets will make it easier

Activation & Maintenance

Mix slurry



Note: use shovel for mixing,
gloves to remove debris

Note: remove large bits of straw
and other contaminants



Activation & Maintenance

Reuse water



Note: water will flow from the outlet as the manure slurry is added

Activation & Maintenance

Wait for biogas



Note:
Add more fresh manure slurry if

Activation & Maintenance

Cooking with biogas!



Note:
the flame can be hard to see

Note:
Biogas is often difficult to ignite
due to low potency



Activation & Maintenance

Feeding with scraps



Note:
the flame can be hard to see



Activation & Maintenance

Liquid fertiliser



Note:
This is undiluted fertiliser



Note:
Fertiliser is diluted with 3 parts
water and used as top dressing

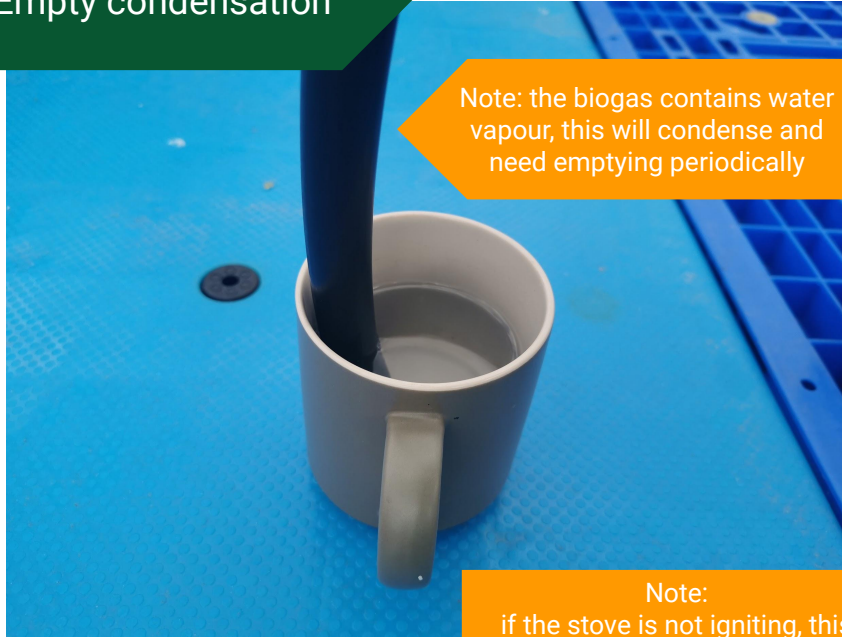


Activation & Maintenance

Empty condensation

Note: the biogas contains water vapour, this will condense and need emptying periodically

Note:
if the stove is not igniting, this
may be that there is water in the
biogas line



Activation & Maintenance

Next step



Decommissioning in the next
Visual Guide